

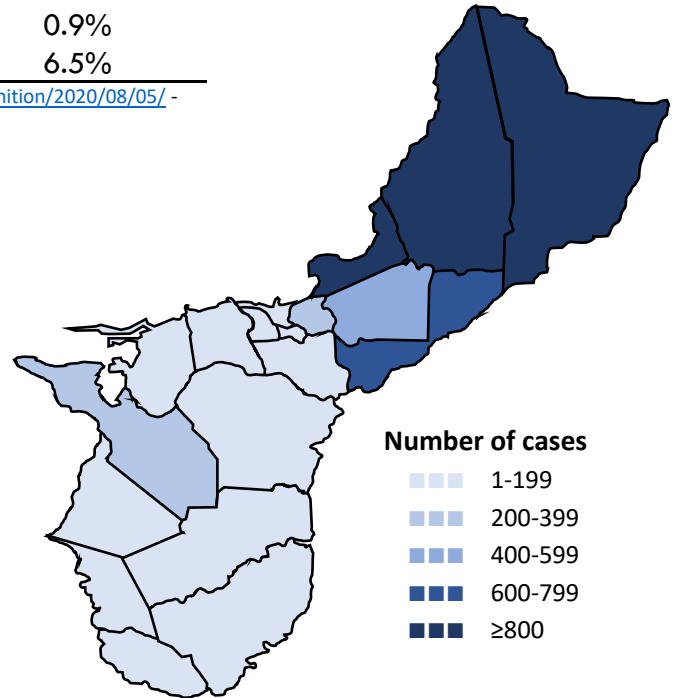


Guam COVID-19 Situation Report - 195

March 12–January 15, 2021

COVID-19 Case Count*	Total	Past 8 days	% Increase
COVID-19 Cases	7,474	75	1.0%
Confirmed cases	7,276	63	0.9%
Probable cases	198	12	6.5%

COVID-19 Cases
Primary Reported Residence



*<https://wwwn.cdc.gov/nndss/conditions/coronavirus-disease-2019-covid-19/case-definition/2020/08/05/> - CSTE/CDC COVID-19 case definition (August 5, 2020)

Summary

As of January 15, 2021, there have been 7,474 cases of COVID-19 reported on Guam. Seventy-five (75) new cases of COVID-19 were reported to DPHSS from January 8 – January 14: 63 confirmed cases and 12 probable cases. One COVID-19 case was reported deceased since the last situation report, 125 deaths total.

Confirmed cases - past 7 days: 63 cases tested positive by molecular testing - 31 at GPHL, 14 at DLS, five at DoD, five at American Medical Center, three at GMHA, two at GRMC, two at Guam Radiology Consultants, and one at DOC.

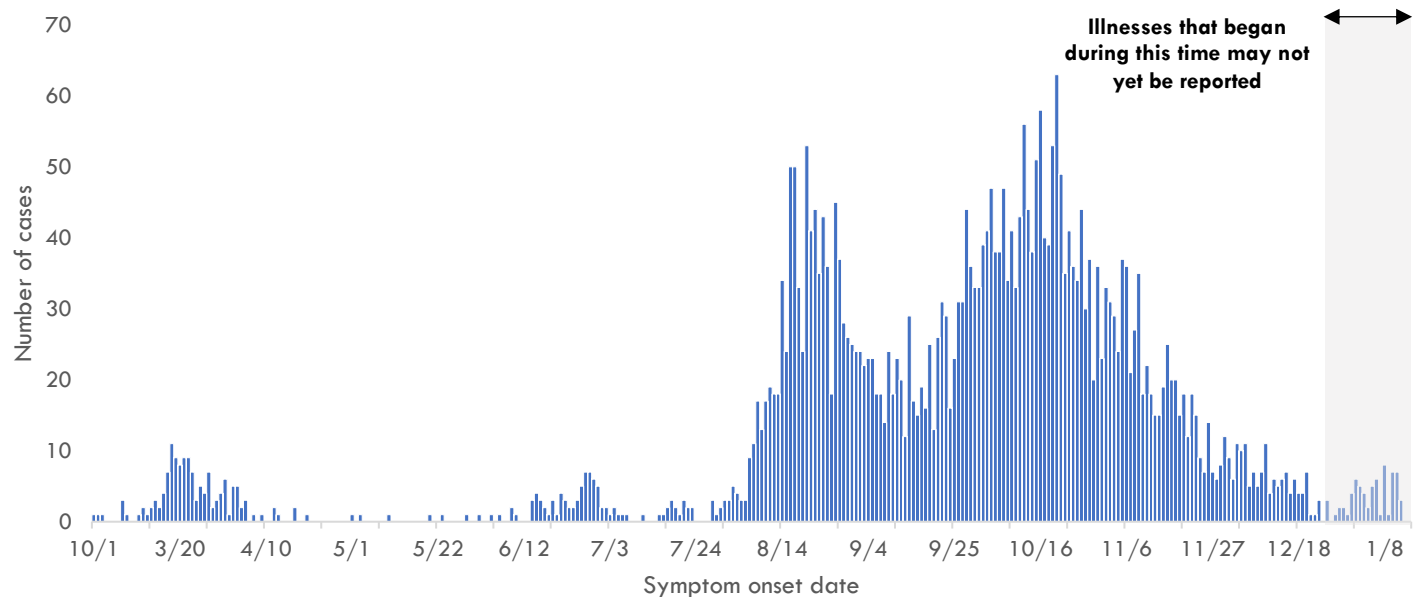
Probable cases - past 7 days: 12 cases tested positive by antigen testing - nine at ExpressCare, and three at GPHL.

Twenty-six (26) cases were identified through contact tracing. 20 cases reported recent travel—19 from the US and one from the Philippines—and were identified in quarantine. Seventy-four (74) cases were reported released from isolation.

COVID-19 Testing on Guam**	Total	Tests reported past 7 days	% pos. past 7 days***
COVID-19 Tests	107,864	3,062	2.9%
Molecular Tests	100,269	1,949	3.9%
Antigen Tests	7,258	1,107	1.1%
Serology Tests	337	6	50.0%

See COVID-19 Testing Breakdown for all testing definitions. New tests reported reflects the number of tests reported to DPHSS since the previous report and does not necessarily indicate the number of specimens run in the same time frame. *7-day rolling average of positive tests as a percentage of tests

COVID-19 cases by symptom onset date, Guam





Guam COVID-19 Situation Report - 195

March 12–January 15, 2021

Case Breakdown

Status	Sex	Current isolation location
COVID-19 deaths	Female	Hospital
Cases in active isolation†	Male	Home
Cases not in isolation‡	Age Group	Isolation facility
Civilian	0-9	Military
Military service member	10-19	Epi-Link to COVID-19 case**
Travel History¶	20-29	Household contact
US	30-39	Workplace contact
Dubai	40-49	Community contact
Japan	50-59	Healthcare contact
Mexico	60-69	Residence
Philippines	70-79	North
Singapore	80-89	Central
Identified in quarantine	90+	South
		Homeless
		Non-resident

Note: Data for recent cases are preliminary and are updated based on findings from case investigations. Residence unknown for 273 cases.

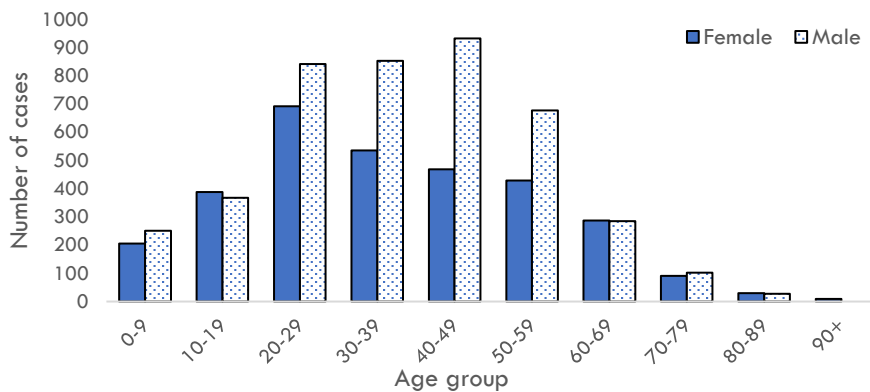
† Cases that test positive for COVID-19 through follow-up molecular testing return to active isolation.

‡ Cases not in isolation indicates the number of COVID-19 cases that are no longer in active isolation based on criteria outlined on page 4. Generally, the criteria assess time since COVID-19 symptom resolution and the date of their most recent positive diagnostic test to qualify for release from isolation.

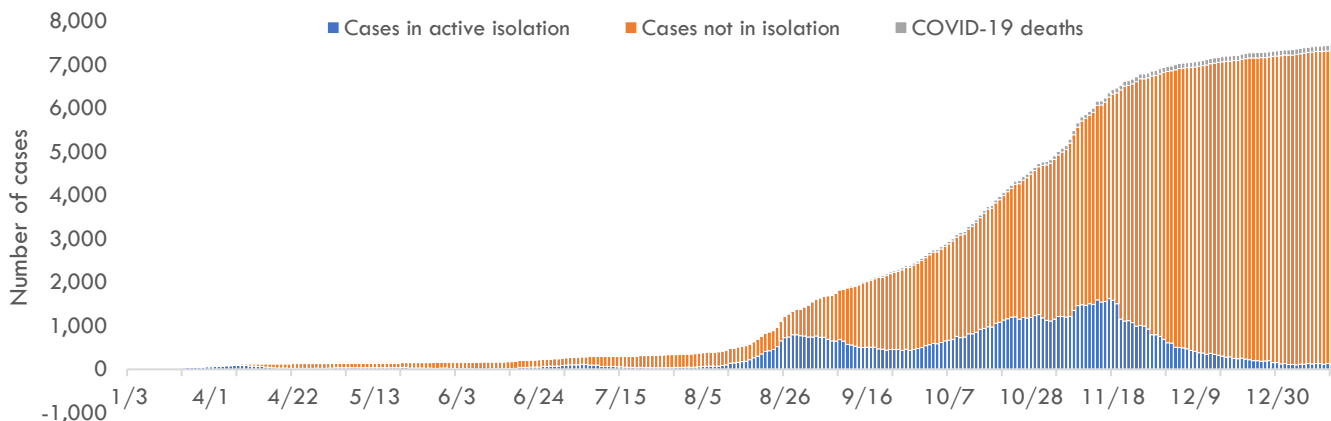
¶ In the 14 days before symptom onset. Some cases traveled to more than one country.

** Some cases have more than one link to other COVID-19 cases.

COVID-19 cases by age group and sex



Number of cases in active isolation, cases not in isolation, and COVID-19 deaths, Guam





Guam COVID-19 Situation Report - 195

March 12–January 15, 2021

COVID-19 TESTING BREAKDOWN

MOLECULAR TESTS	TOTAL	TOTAL POSITIVES*	NEW TESTS	NEW POSITIVES
Guam Public Health Laboratory	51,588	4,158	526	31
Diagnostic Laboratory Services	13,031	1,007	224	14
Department of Defense	12,717	624	407	5
Guam Memorial Hospital Authority	8,854	451	298	3
Guam Regional Medical City	7,402	372	221	2
Private Clinics**	6,660	588	273	8
Guam National Guard Laboratory	17	0	0	0
ANTIGEN TESTS	TOTAL	TOTAL POSITIVES	NEW TESTS	NEW POSITIVES
Private Clinics***	2,183	168	92	9
Guam Public Health Laboratory	5,075	96	1,015	3
SEROLOGY TESTS	TOTAL	TOTAL POSITIVES	NEW TESTS	NEW POSITIVES
Diagnostic Laboratory Services	314	20	6	3
Department of Defense	23	2	0	0

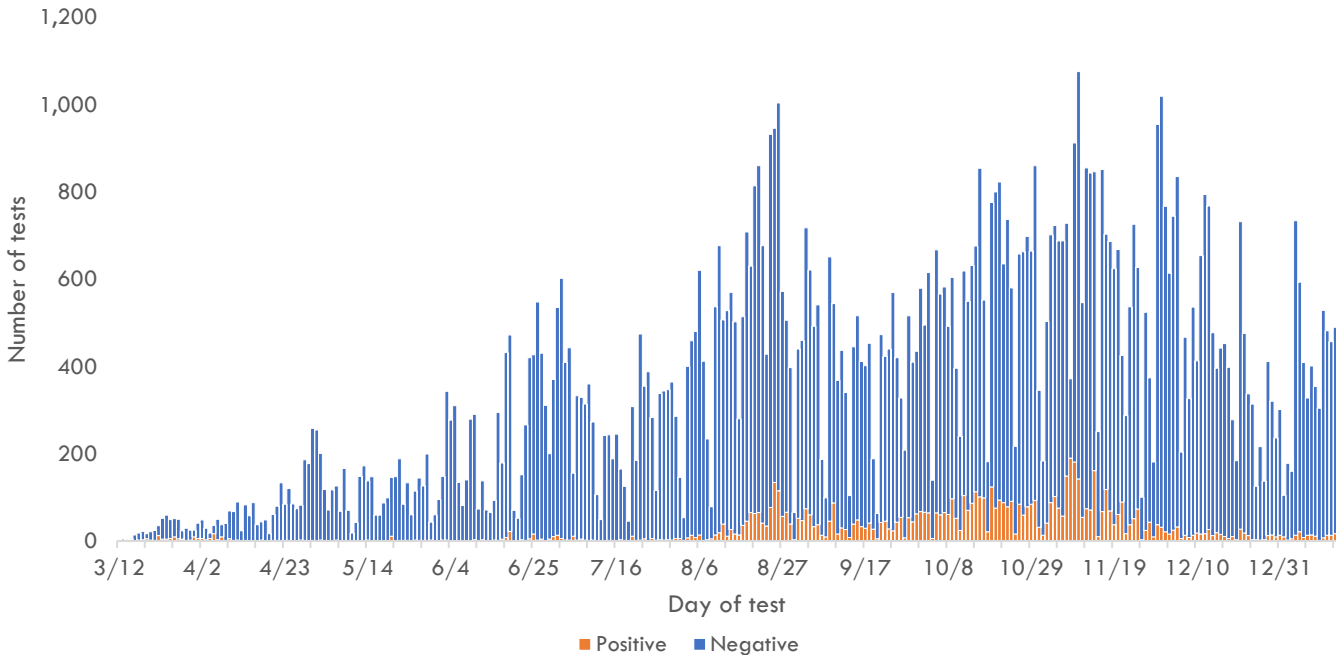
Total tests is defined as the number of specimens with conclusive results. New tests reported today is defined as the total tests reported to DPHSS since the last Situation Report. Percent positive is defined as number of positive specimens, out of all specimens tested. Total positives is defined as the number of positive specimens.

*Five additional confirmed cases tested positive through molecular testing at an out-of-state laboratory.

**Clinics included: American Medical Center, Guam Medical Care, Guam Radiology Consultants, Dr. Sheih's Clinic, and One Love Pediatrics.

***Clinics included: American Medical Center, Central Medical Clinic, ExpressCare, IHP Medical Group, Evergreen Health Center, Cancer Center of Guam, Department of Corrections, and Guam Medical Care.

COVID-19 testing by day of test, Guam



CONTACT INVESTIGATIONS	TOTAL	PAST 7 DAYS
Contacts identified by DPHSS	12,508	108
Contacts notified by DPHSS	6,427	43
Contacts tested by DPHSS	4,325	43
Cases identified through contact tracing	2,872	26

Note: Data for recent cases are preliminary and are updated based on findings from case investigations.

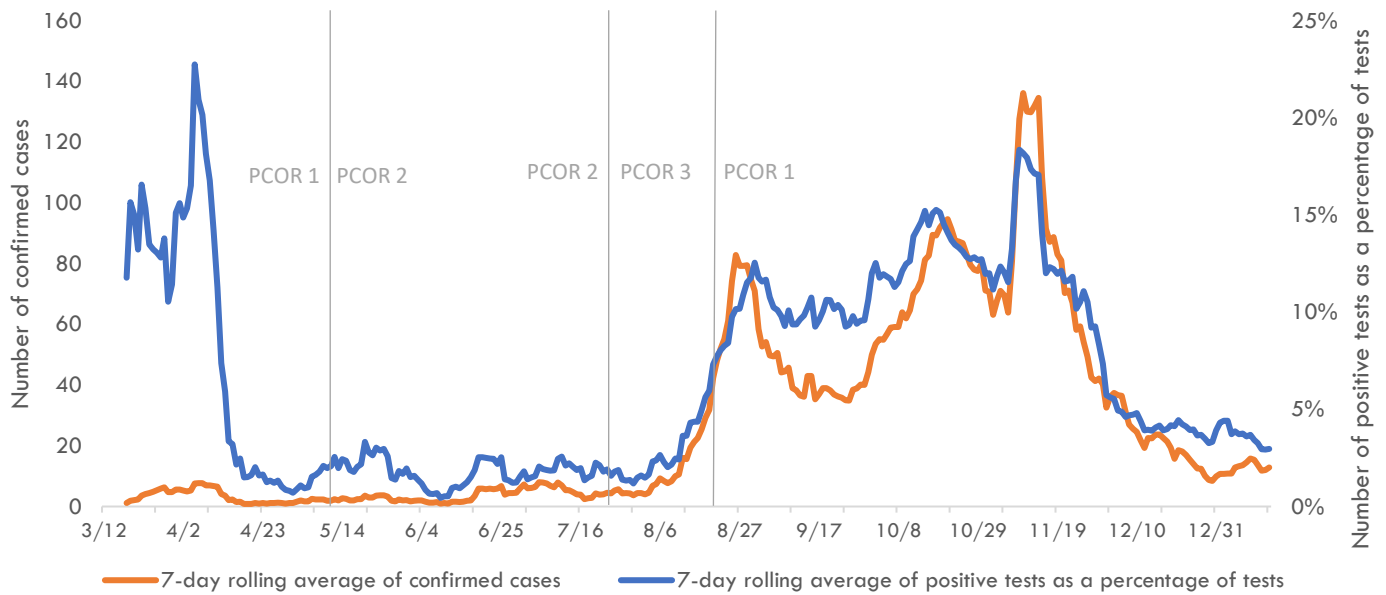


Guam COVID-19 Situation Report - 195

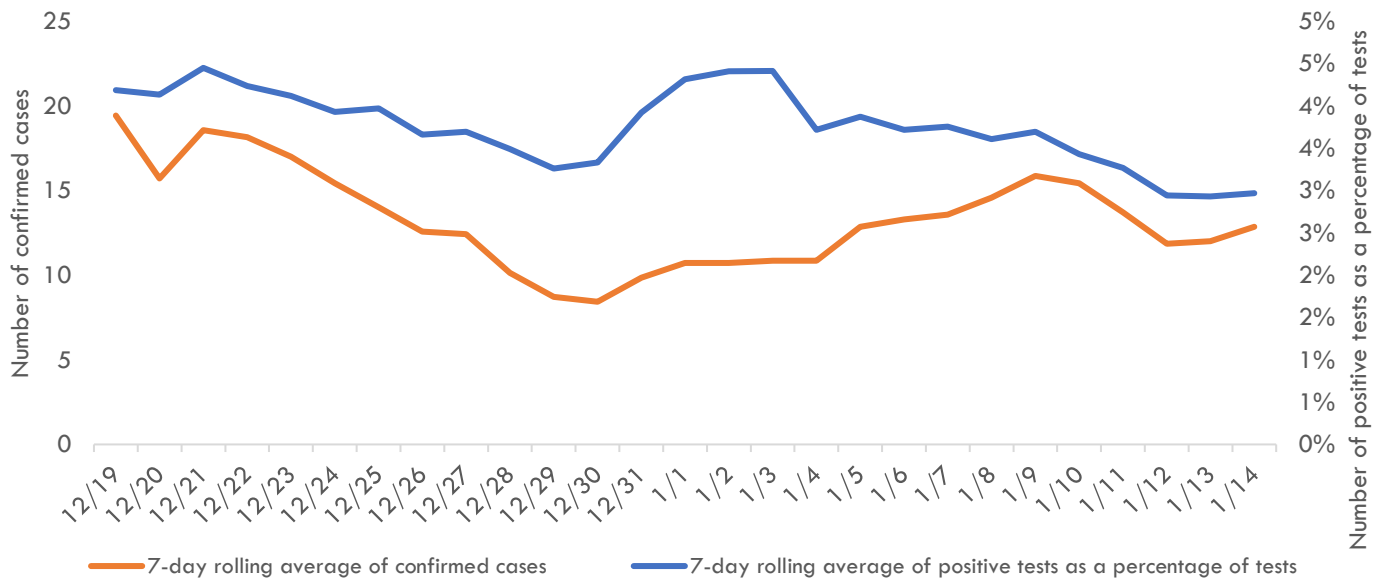
March 12–January 15, 2021

Pandemic Condition of Readiness Assessment

Triggers for PCOR - Cases, March 12–January 14, 2021



Triggers for PCOR - Cases, Previous 28 days



† Criteria for release from isolation

For persons with mild to moderate illness who are not severely immunocompromised:

For persons having symptoms: At least 3 days have passed since recovery defined as resolution of fever without the use of fever-reducing medications and improvement in respiratory symptoms (e.g., cough, shortness of breath) and any other symptoms attributed to COVID-19 AND at least 10 days have passed since symptoms first appeared—or since recurrent symptoms appeared—AND at least 10 days have passed since the date of their first (or most recent) positive COVID-19 diagnostic test.

For persons without symptoms: At least 10 days have passed since the date of their first (or most recent) positive COVID-19 diagnostic test assuming they have not subsequently developed symptoms since their positive test.

For persons with severe to critical illness or who are severely immunocompromised:

For persons having symptoms: At least 10 days have passed since symptoms first appeared, up to 20 days.

For persons without symptoms: At least 10 days have passed since the date of their first positive COVID-19 diagnostic test, up to 20 days.